

# Community Schools: A Regional Movement

2024 Nonprofit Summit: We Thrive Together  
June 25, 2024



United Way of Greater Rochester  
and the Finger Lakes  
Serving Genesee, Livingston, Monroe,  
Ontario, Wayne, and Wyoming Counties

# Agenda

- Ice Breaker
- Community Schools as a Movement
- United Way as a Regional Champion
- You as a Regional Champion
- Join your County Coalition



## Ice Breaker

**If you could imagine our schools in the future, what do you want them to look like?**

[Sign In](#)[Locations](#)[Resources & Tools](#)[Careers](#)[Customer Service](#)[Search](#)[Live Chat](#) [Banking](#)[PERSONAL](#)[BUSINESS](#)[WEALTH](#)[COMMUNITY](#)[ABOUT US](#)[FINANCIAL WELLNESS](#)

[Home](#) > [Community](#) > [Community Impact](#) > [Stories](#) > [Education - Community Schools](#)

### Community Impact

- [Meet our Team](#)
- [Grant Requests](#)
- [Grant Opportunities](#)
- [Stories](#)

### ESL in the Community

## Community Schools: Successful Student Outcomes

School districts throughout the Greater Rochester region are partnering with local organizations to establish “Community Schools.” Community schools are public schools that partner with local organizations to provide students and their families with support services to address out-of-school barriers, poverty, physical and mental health, food insecurity, or clothing. Community schools are more than a place – they bring parents, community partners, and schools together, organizing schools around the student and their success. (Disclosure: ESL is a funder of several local community school initiatives)

The Rochester City School District, Greece Central School District, and Wayne County Community Schools are seeing measurable results in attendance, reading scores, and graduation rates that highlight the power of these community partnerships.

We invite you to watch below to learn more about the success of Community Schools in our area and their impact on students, families, and the community itself.

Click below to watch the first video in this three-part video series.



[Impact Stories](#)



# Share!

**What do you know about  
Community Schools from your  
experience or the  
ESL Video?**

**Community Schools Coalitions are a national strategy. We are going to help each other get better. We show up. We show up for one another, for our youth and families, and for our communities.**

**We will advance a county-by-county strategy. Countywide coalitions will connect communities to one another in each county and across the state.**





## HISTORY OF THE COMMUNITY SCHOOLS MOVEMENT IN NEW YORK STATE

DRAFT



**1906**

Children's Aid opens the first free school-based dental clinic.

**1977**

Communities in Schools (CIS) forms in New York City to bring community resources inside public schools.

**1991**

The New York City Beacons Initiative links community-based and nonprofit organizations with schools to increase supports for youth and families.

**1992**

Children's Aid establishes the first community school model in Washington Heights (NYC), incorporating afterschool programs and comprehensive health and social services within the school building.

**1997**

Joy Dryfoos, Ira Harkavy, and Pete Moses, convene a meeting in New York City to explore the historic relationship between school and community. The Emerging Coalition for Community Schools is formed.

**2012**

The UFT, Partnership for NYC, Trinity Church, and New York City Council officially form the NYC Community Learning Schools Initiative (eventually to become United Community Schools).

**2013**

New York State releases the first of two rounds of funding through the Community Schools Grant Initiative.

**2014**

The New York State Community Schools Network first convenes in Chicago through the Coalition for Community Schools. NYSUT starts supporting community schools through the connected community schools approach.

**2015**

The Office of Community Schools is established in NYC. The community-based organization receives funding and hires a Community School Director and supporting staff.

**2016**

The first statewide convening focused on community schools is hosted by the New York State Community Schools Network at the University at Albany. Buffalo Public Schools launches their first 13 community schools. The first NYSED Aid/Foundation Aid Community Schools Set-Aside totaling \$100 million (225 districts) is included in the state budget.

SOME MORE ABOUT HOW THINGS ARE GOING....AND GROWING!!

**2017**

The first BOCES Cooperative Services (CoSer) agreement is approved for Rockland 21C. Wayne County Community Schools launches for a county-wide community schools initiative.

**2018**

To support the community school model statewide, NYSED establishes three regional Community Schools Technical Assistance Centers to assist Community Schools throughout the state.

**2019**

Binghamton University Community Schools officially starts the first county-wide university assisted community schools in New York State expanding the foundational work supported by Broome County Promise Zone. New York State increases the Community Schools Set-Aside funding to \$250 million (240 districts).

**2020**

Binghamton University serves as the fifth national University-Assisted Community Schools (UACS) Regional Training Center through the Netter Center.

**2022**

NYSED adds a question asking schools to identify if they are community schools on their BEDS report forms.

**2023**

The NYS Community Schools Thruway Coalition forms to respond to a call for statewide approaches through the Full-Service Community Schools program.

**2024**

The first statewide Community Schools Equity & Resilience conference is held in Troy, NY.

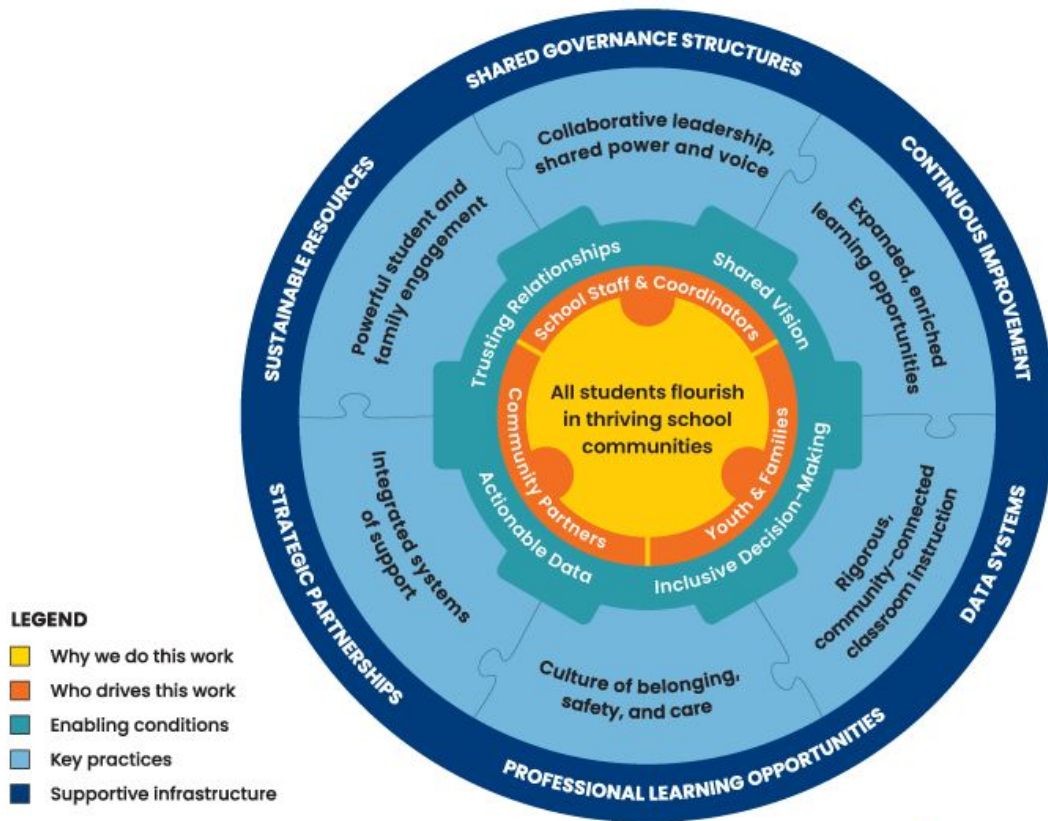


[www.nyscsn.org](http://www.nyscsn.org)

The NYS Community Schools Network is worth a follow!! [WWW.NYSCSN.ORG](http://WWW.NYSCSN.ORG)



# Essentials for Community School Transformation



# United Way as a Regional Champion



# Table Group Instructions & Questions

- A - Join your county specific table/breakout group,
- B - Introduce yourself to the group and meet your group members
- C - Pick a notetaker, and
- D - Using the Essentials Model....

1. How do you or your agency contribute to the Enabling Conditions for Community Schools?
2. There are six key practices arranged like puzzle pieces. How do you see your work fitting into the key practices categories?
3. Choose a county... or two... but ONE at a time... what supportive infrastructure do you recognize as a potential help? How do you support creative infrastructure for Community Schools?

## QUICK GOOGLE WINS:

How many school districts in your county? Buildings? Students? Check out the NYSED Public Data Site

# United for ALICE



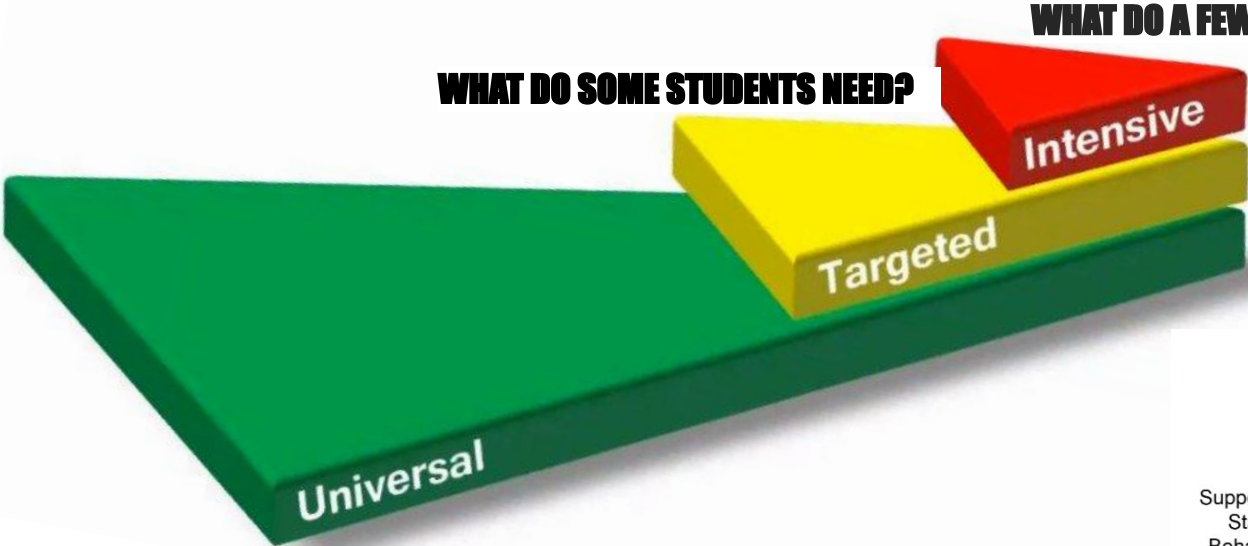
A Data Driven Analysis for Poverty





**WAYNE COUNTY**  
Community Schools

# MTSS- Multi-Tiered Systems of Support



**WHAT DO ALL STUDENTS NEED?**

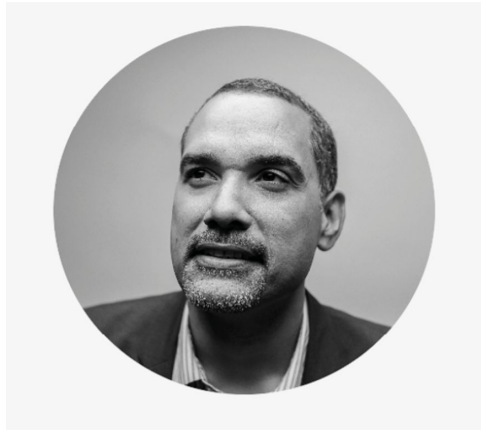


# MTSS and Community Schools: Past, Present, and Future

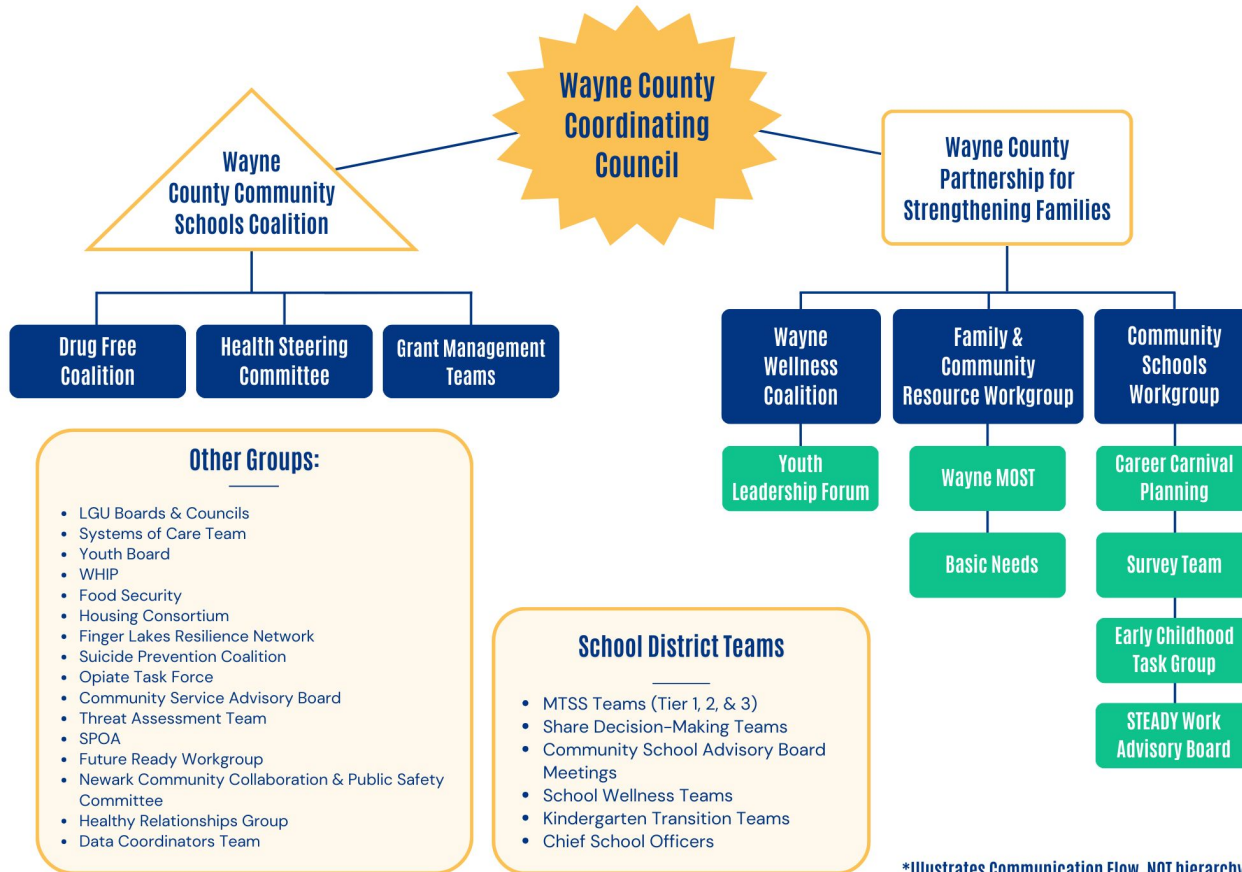
National experts unpack the MTSS framework and Community Schools strategies to showcase the synergy and mutual benefit of the two schools of thought. Abe Fernandez is the Director of the National Center for Community Schools and Brian Meyer is the Co-Director of MidWest PBIS.

Held on Jan 25, 2024, 11:00 AM – 1:00 PM

Recorded Virtual Event: [Here](#)



# Wayne County Collaboration & Communication Flow

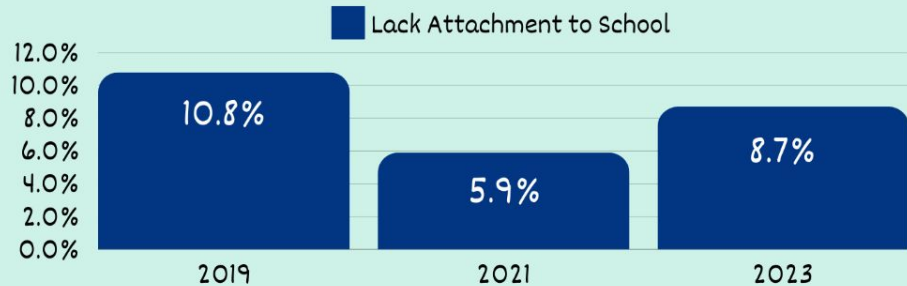
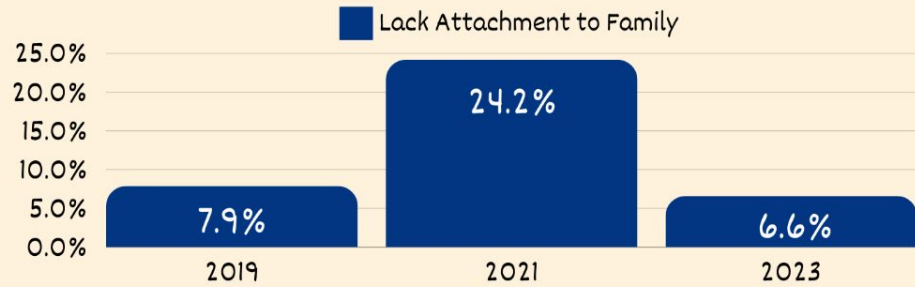
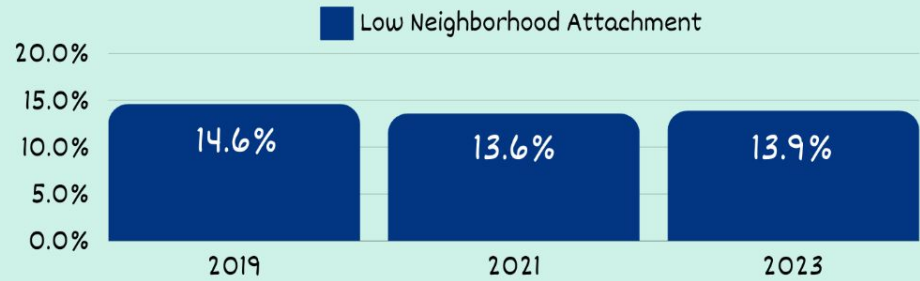


\*Illustrates Communication Flow, NOT hierarchy



# Wayne County EYS 2023

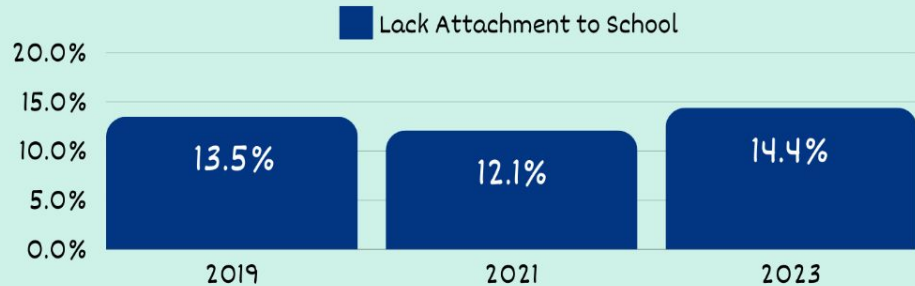
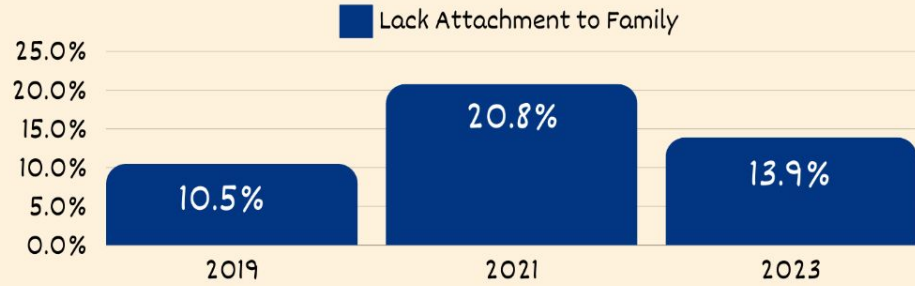
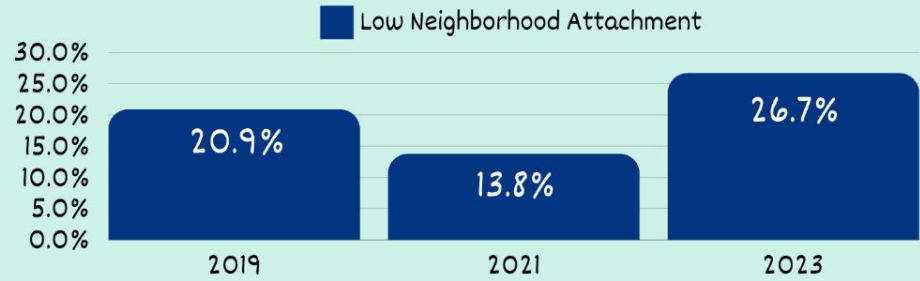
## Middle School Attachment



Please visit [waynepartnership.org/evalumetrics-youth-survey](https://waynepartnership.org/evalumetrics-youth-survey) for more info

# Wayne County EYS 2023

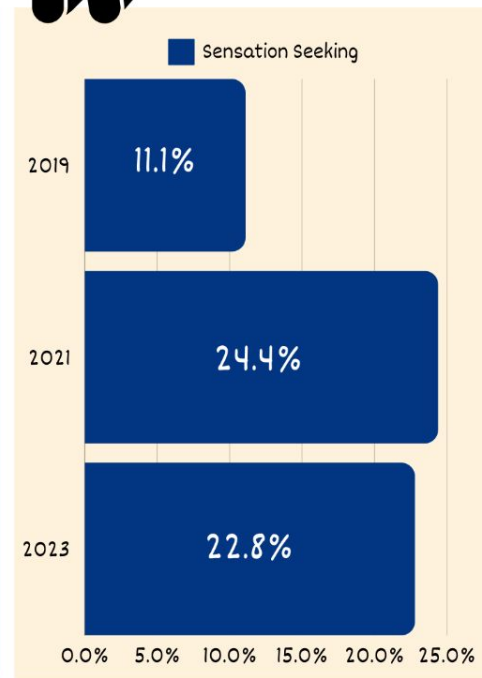
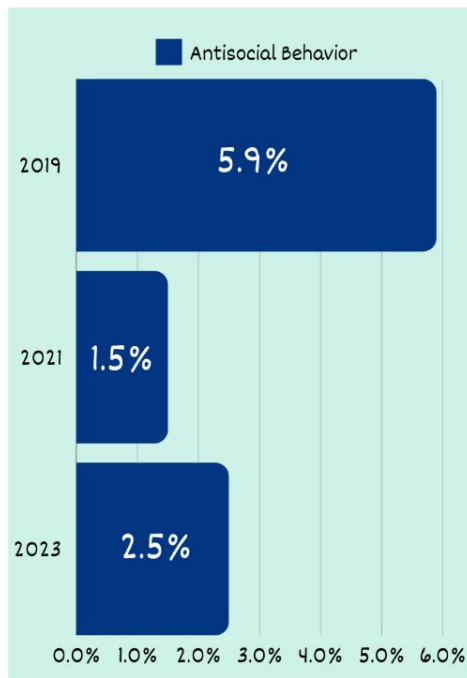
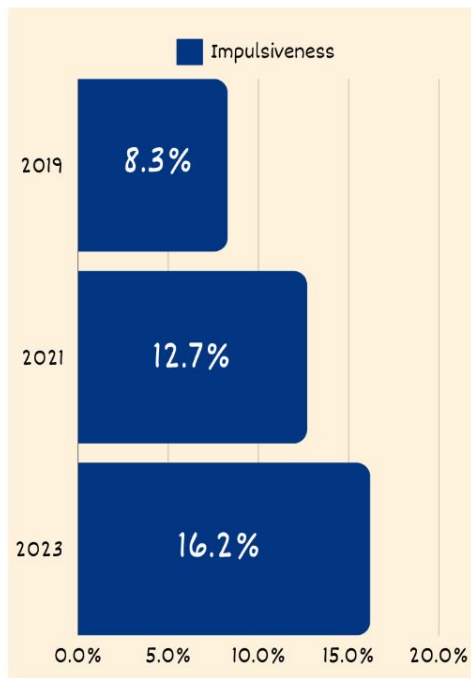
## High School Attachment



Please visit [waynepartnership.org/evalumetrics-youth-survey](https://waynepartnership.org/evalumetrics-youth-survey) for more info

# Wayne County EYS 2023

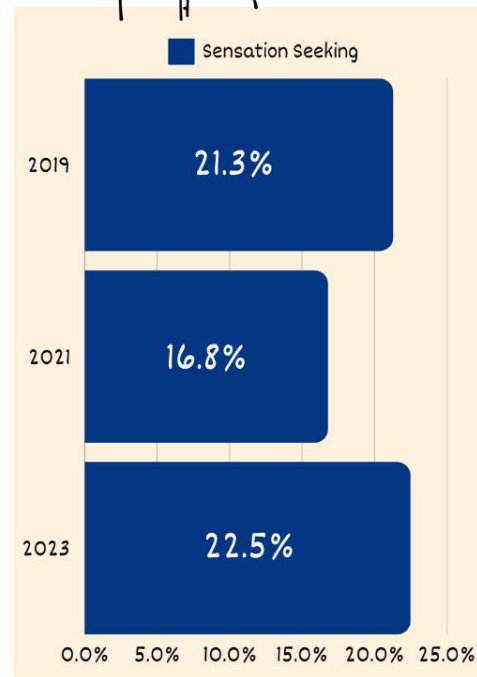
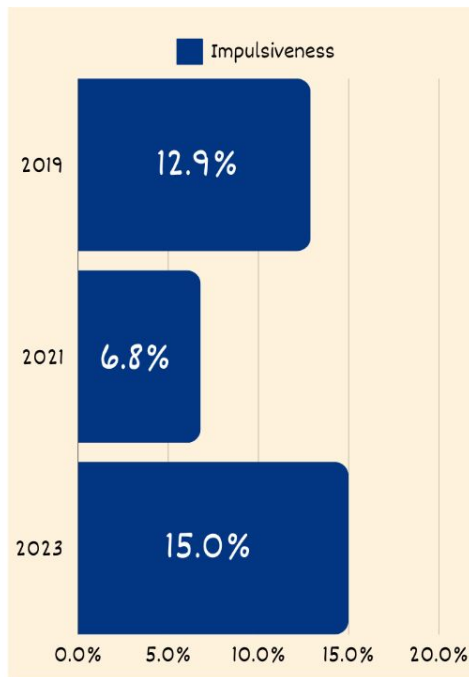
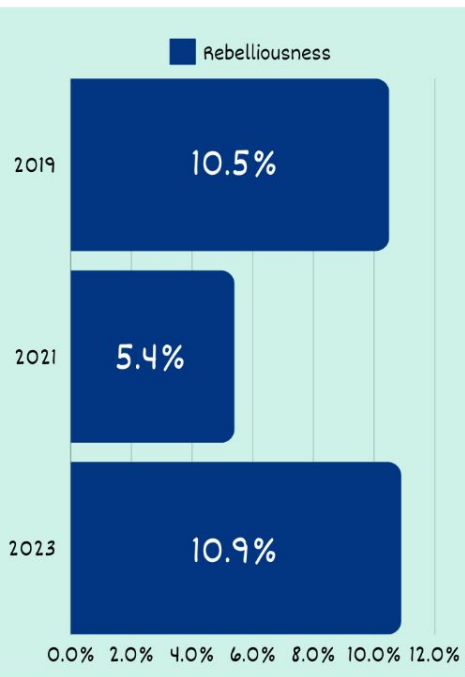
## Middle School - Regulation of Self



Please visit [waynepartnership.org/evalumetrics-youth-survey](https://waynepartnership.org/evalumetrics-youth-survey) for more info

# Wayne County EYS 2023

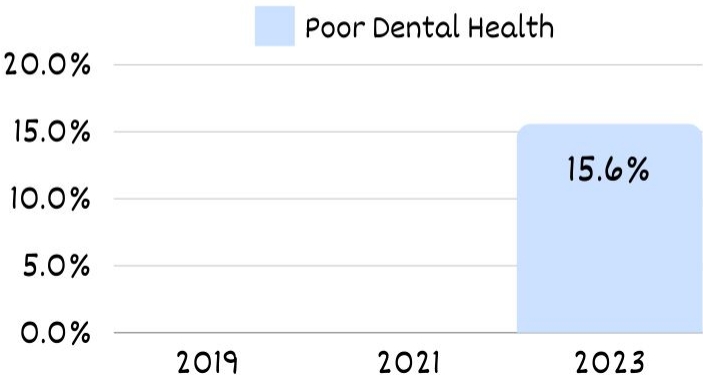
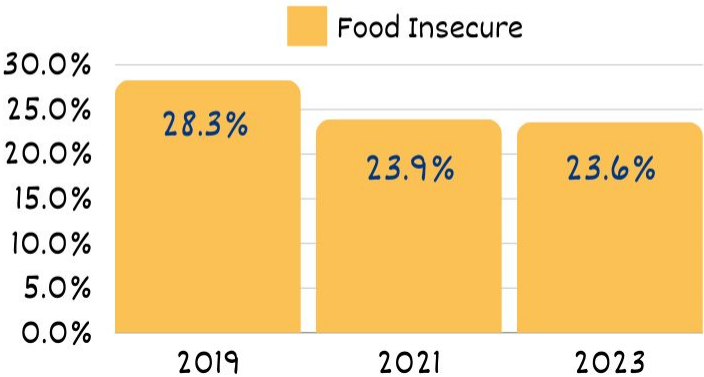
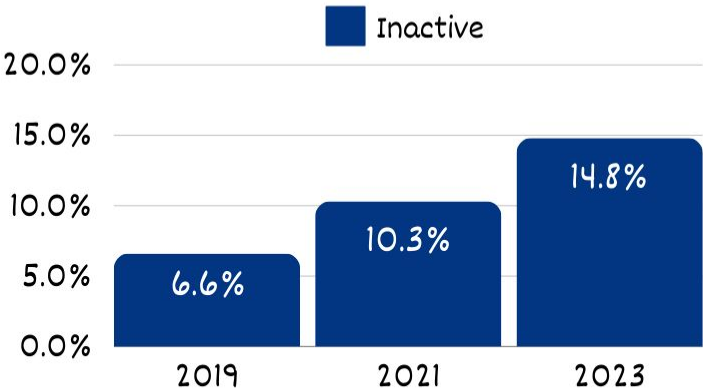
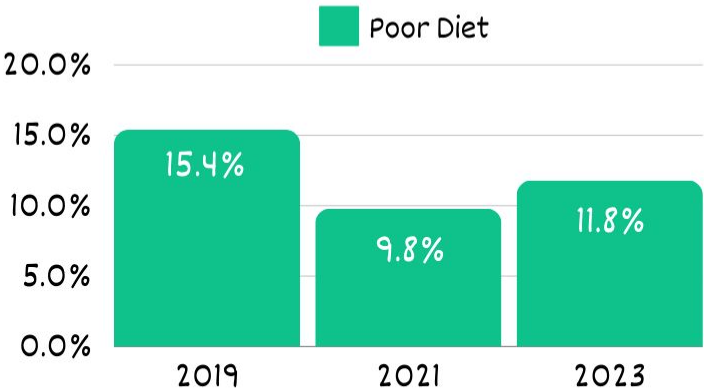
## High School - Regulation of Self



Please visit [waynepartnership.org/evalumetrics-youth-survey](https://waynepartnership.org/evalumetrics-youth-survey) for more info

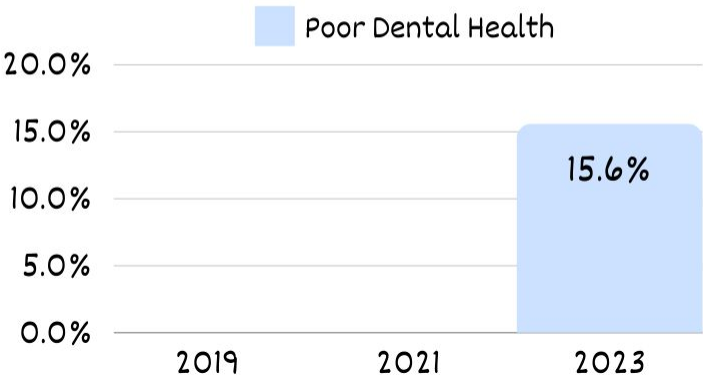
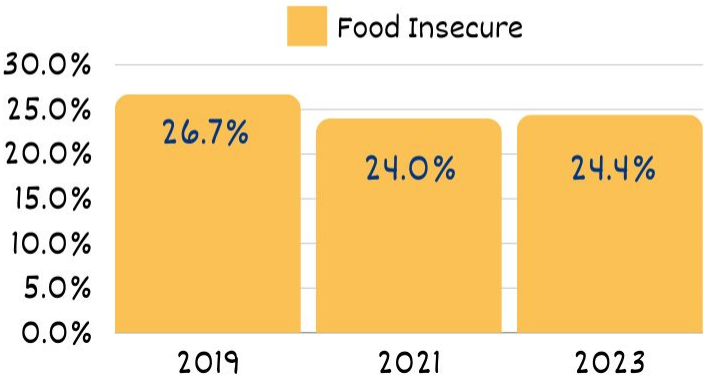
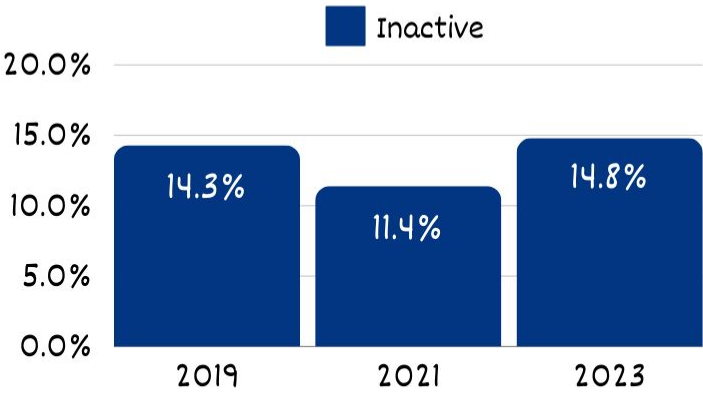
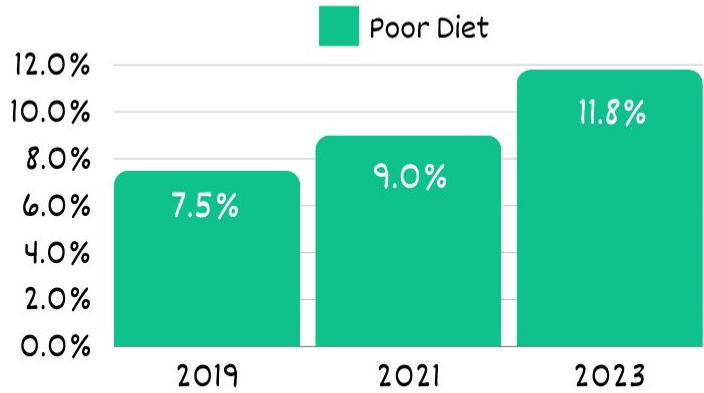
# Wayne County EYS 2023

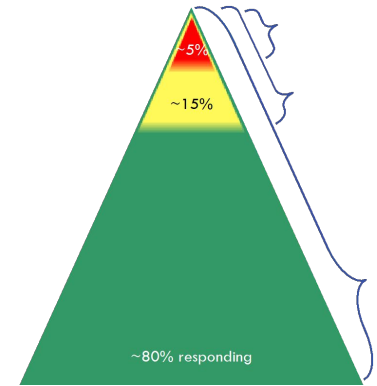
## Middle School - Health



# Wayne County EYS 2023

## High School - Health





**TIER**

**ATTACHMENT**

**REGULATION**

**COMPETENCE**

**HEALTH**

**TIER 1**

Hallway Greetings  
Community Circles  
Inclusive language/curriculum

PBIS Lessons  
SEL Curriculum  
Prevention Curriculum

Core Curriculum/Clubs  
After School Program  
Differentiated Instruction

Universal Free Lunch  
Recess  
Public Health Dept lessons

**TIER 2**

Peer Mentoring  
SEL Groups  
Check In/Check Out  
Conflict Resolution Circles

SEL Boosters  
Re-teach for behavior  
Check In/Check Out

Peer Tutoring  
College Tutors  
College Bound  
Career Exploration Groups

Fitness Groups  
Weekend Food Program

**TIER 3**

Mentoring  
Therapy  
Harm Repair Circles  
Crime Victim Advocacy

FBA/BIP  
Therapy  
Crime Victim Advocacy

Individual Tutoring  
Modified Schedules

School Food Pantry

**SCHOOL & COMMUNITY RESOURCES**

## 2023 STEADY Work Survey Data Attachment

**76%** of youth stated that they have established meaningful relationships with their peers through the program

**90%** of youth stated that they can identify a safe space within their respective communities

**87%** of youth stated that they feel more connected to their community

**98%** of youth would recommend the STEADY Work program to their peers





## **2023 STEADY Work Survey Data** **Regulation**

**85%** of youth state that they can regulate their emotions in a positive way more effectively

**90%** of youth stated that they are more flexible and more confident in adapting to unexpected situations

**87%** of youth state they are more resilient

**88%** of youth stated they have developed effective coping mechanisms



## 2023 STEADY Work Survey Data Competency

**88%** state that they have gained important skills through participation in STEADY Work

**97%** of youth said that they are more likely to take responsibility for their actions and learn from their mistakes

**97%** of youth said that they are now more confident in their ability to solve problems

**85%** of youth said that they have improved their communication skills



## 2023 STEADY Work Survey Data Health

**94%** of youth said that they would make safer decisions related to drugs and/or alcohol

**99%** of youth said that have established new goals and are working towards them

**89%** of youth stated that they feel more resilient

**81%** feel that they value education more than before they participated in STEADY Work



### Backbone Agency

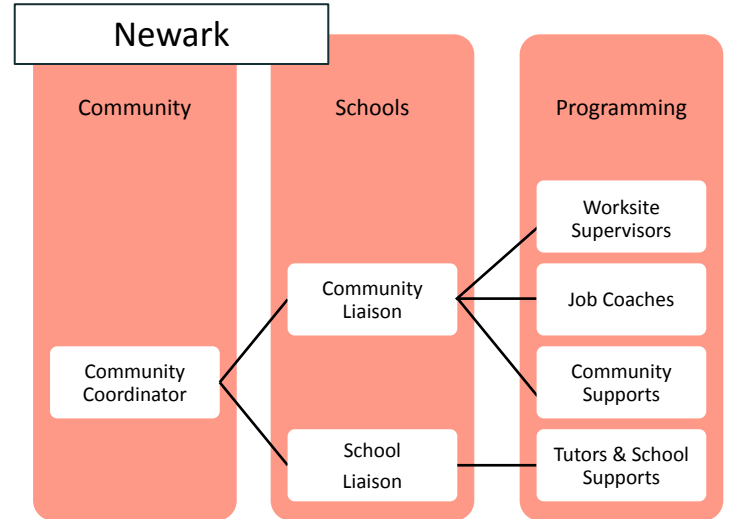
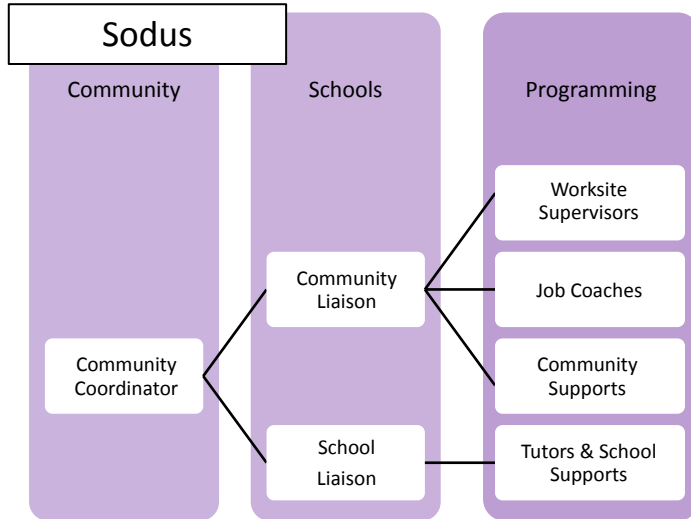
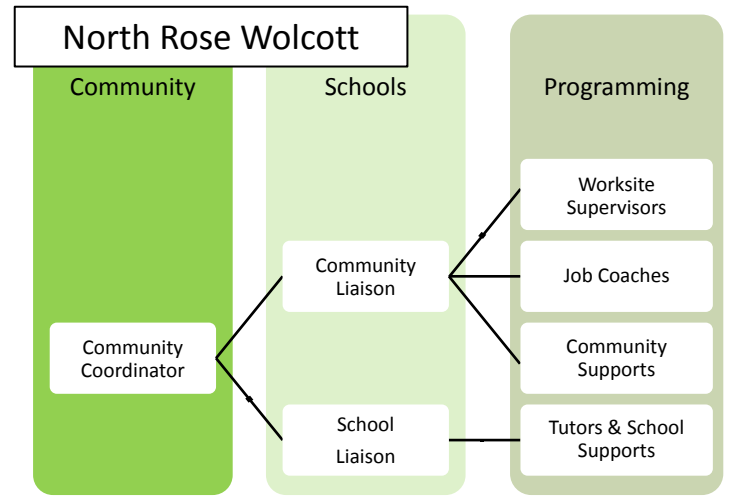
- Payroll
- Liability
- Workers Comp
- Braiding Funding
- Organizing teams in each community

### Community Teams

- Enrolling
- Connecting to employers
- Finding local supports
- Checking in with individual kids
- Operating as a Community Team



# WAYNE COUNTY Community Schools



# Who is involved?



<b>Juvenile Justice</b>	<b>Out of School Time Programming</b>	<b>Social Services</b>
	K-12 Education	Vocational Education
Local Businesses	Banks & Credit Unions	Community Based Organizations
	County Government	Town & Village Governments
Mental Health Services	Federal & State Government Funding	Philanthropic Funders
	Neighbors & Friends	Substance Abuse Prevention
Parents	Churches	Food Pantries



**STEADY** Work

# PROGRAM GROWTH

2020- 41 Youth

2021- 108 Youth

2022- 189 Youth

2023- 410 Youth

(10x increase in four years)

# SUCCESS STORY



"I just wanted to let you know that we have Adam\* scheduled for his 5-hour course. He is purchasing a car with money saved from working for weatherization, which we established as a goal. We paid for his course as a Christmas present. Staff have been taking him driving on their own time, in their own vehicles, and investing in his success. **He finally feels like he has the confidence to pass the test.**

He's been one of our **hardest workers** and really a bright spot for us. **I think we have a life-er here, and those are incredibly rare.** It's been really rewarding to see him come out of his shell and although he's still not a "talker," he does joke with the rest of the crew now and I think views several of them as family. This week he even found a new crew member and pulled him aside and said "I know what it's like to be new - but this is a great place to work, and anything you need, you come and find me and I'll help you." **I almost hugged him right on the spot.**

We were at a house in Auburn and there was an uninsulated space under a laundry room floor. The hole to get into the space was 12"x18". I was on site and determined it was impossible to insulate the space. Sam looked at me and said **"It would be a shame to not do everything we could for these people, I think I can fit."** I kid you not, in one spot there was only 8" of clearance. He did it - the whole thing - moving rocks and digging - working on his back and at times even getting stuck - until the job was done. Thanks for finding us a good one."

Ryan Robbins, Finger Lakes Community Action

\*Name changed to protect privacy

# Let's Use The Wheel & Get Rolling!

COALITION FOR COMMUNITY SCHOOLS:

NYS COMMUNITY SCHOOLS NETWORK

THRUWAY COALITION & NYC COALITION

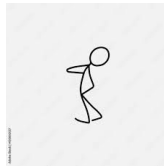
FLX COMMUNITY SCHOOLS & CNY COMMUNITY SCHOOLS

ONTARIO COUNTY, WAYNE COUNTY, MONROE COUNTY.... COMMUNITY SCHOOLS

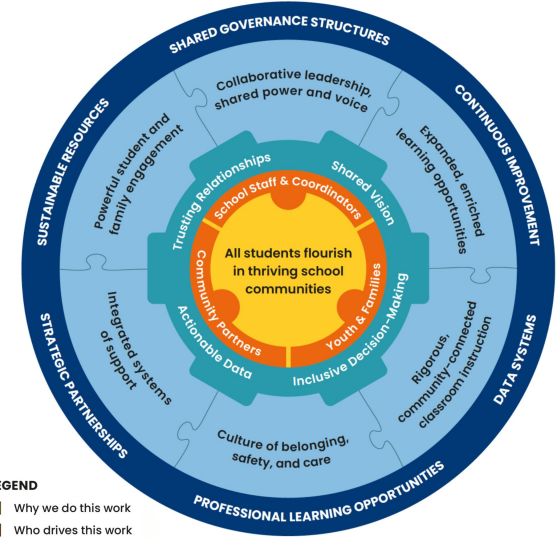
COMMUNITY SCHOOL DISTRICTS

COMMUNITY SCHOOL BUILDINGS

COMMUNITY SCHOOL CHAMPIONS!!! ←



You, yes .... you!







*Save the Date!*

**COMMUNITY  
SCHOOLS COALITION  
OF MONROE COUNTY**

**OFFICIAL LAUNCH!  
OCTOBER 17, 2024  
11 AM-2 PM  
PLACE TBD**

*More details to follow later this summer!*

# Ontario County Community Schools

Family Counseling Services of  
the Finger Lakes

Finger Lakes Community College

Hobart Williams Smith

Finger Lakes Area Counseling &  
Recovery Agency



# Wayne County Community Schools



# ACTION TIME:

YOU CAN SIGN UP TO  
FOLLOW ON SOCIAL  
MEDIA

PLAN TO ATTEND THE  
'CUSE CONVENINGS IN  
JULY!!

JOIN THE THRUWAY  
COALITION & NYS CSN

YOU CAN LEARN! CHECK  
OUT THE ONLINE  
RESOURCES

# COMMUNITY SCHOOLS FORWARD: ENABLING CONDITIONS & KEY PRACTICES

Gathering the Champions for Readiness and Implementation



## INITIAL AGENDA

- 9 AM - Welcome: Dr. Ryan Heath, SU
- 9:15 AM - Key Note: Dr. JoAnne Ferrara
- 10:30 AM - Break
- 10:45 AM - Morning Microbursts of Practice: 15-minute "Ted Talk" style success stories & strategies
- 12 PM - Networking Lunch
- 1 PM - National Experts Panel on Enabling Conditions
- 1:45 PM - Facilitated Discussions: Next Steps
- 3 PM - Closing Remarks: Dr. Vic Young
- 3:30 PM - Networking at the Sheraton

Organized by Central NY Community Schools and FLX Community Schools

## JULY 24, 2024

SYRACUSE UNIVERSITY SCHINE STUDENT CENTER  
200 WAVERLY AVE, SYRACUSE, NY 13210

9 AM - 3:30 PM | NETWORKING TO FOLLOW

The **Community Schools Essentials Model** provides a unified way for all of us to examine our efforts together. Community School Coordinators, building principals, partners, school staff, families, and youth are invited to examine the Enabling Conditions and Key Practices for Community Schools. Plan to sit at a table with like-minded champions for a day balanced with inspiration, information, discussion, and planning.



REGISTER NOW!



[thruwaycoalition.org/events](https://thruwaycoalition.org/events)

# BEING A COMMUNITY SCHOOLS LEADER

No Transformative Work Happens Without Leadership

## OUR SPEAKERS



NELSON KISE  
SUPERINTENDENT



ANIBAL SOLER, JR.  
SUPERINTENDENT



VIC YOUNG  
MANAGING DIRECTOR  
VCY STRATAGEM LLC



JOLINE COLLINS  
REGIONAL DEPUTY DIRECTOR  
COMMUNITY SCHOOLS IEL  
NORTHEAST USA

## JULY 25, 2024

SYRACUSE UNIVERSITY SCHINE STUDENT CENTER  
200 WAVERLY AVE, SYRACUSE, NY 13210

9 AM - 3 PM | NETWORKING TO FOLLOW

Join us as we look at the **broader context of transformative work**. We will provide leadership examples and opportunities for facilitated discussion with other school leaders from around New York State. The day is designed for school building and district leaders to gain insight from examples of leaders at Community Schools, and have an opportunity to work through challenges and opportunities through facilitated discussions led by Syracuse University and the Coalition for Community Schools.



REGISTER NOW!



[thruwaycoalition.org/events](https://thruwaycoalition.org/events)